



1

---

---

---

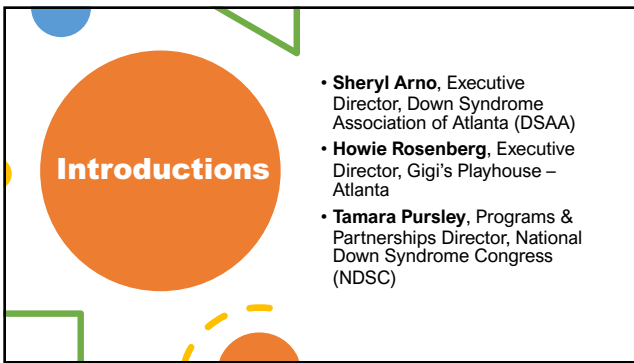
---

---

---

---

---



2

---

---

---

---

---

---

---

---



3

---

---

---

---

---

---

---

---

**Poll Question**

If you have both a DS group and a Gigi's in your service area, how do you get along?



---

---

---

---

---

---

---

4

**Pro's and Con's**



---

---

---

---

---

---

---

5

**What are the positives?**

- Greater good for the families
- Streamlining of programs & services
- More DS awareness and advocacy



---

---

---

---

---

---

---

6

• Competing for funding  
• Personality conflicts

**What are the real problems?**

---

---

---

---

---

---

---

---

7

**Best Practices**

- Support each other's initiatives willingly
- Be willing to give more than you get, even funding
- Maturity of the leaders
- Can't care about who gets credit!

---

---

---

---

---

---

---

---

8

**Can you create a consortium of organizations in your state?**

- Who's willing to take the first step?
- GA DS Consortium – started in 2017 with 5 orgs

**The Georgia Down Syndrome Consortium**  
Down Syndrome Association of Atlanta – CDC Downstate Atlanta  
 AAI's Ability Medical Institute – Georgia Down Syndrome Clinic  
 National Down Syndrome Society

---

---

---

---

---

---

---

---

9

**Why collaborate?**

- Reach more families through collaborative events
- Give referrals to each other's orgs
- Make a bigger impact with advocacy efforts
- Include other disability organizations to expand reach and impact

10

---

---

---


---

---

---

---

---



**Poll Question**

Do you align your organization with a national organization?

11

---

---

---

---

---

---

---

---

**Can you work with a national organization to achieve your goals?**

- Leverage the resources and strengths of all groups
- Examples:
  - ✓ Joint statements
  - ✓ Collaborative events
  - ✓ Advocacy efforts

12

---

---

---

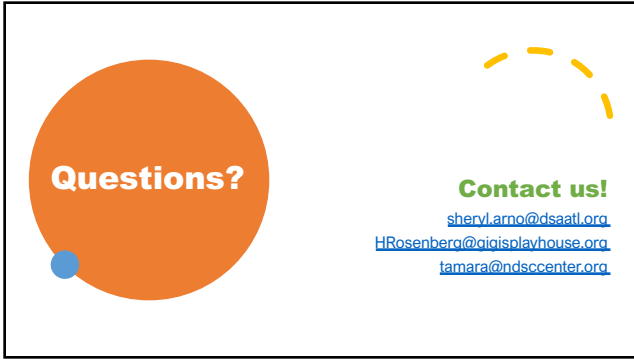
---

---

---

---

---



**Questions?**

**Contact us!**  
[sheryl.arno@dsaatl.org](mailto:sheryl.arno@dsaatl.org)  
[HRosenberg@gigisplayhouse.org](mailto:HRosenberg@gigisplayhouse.org)  
[tamara@ndscenter.org](mailto:tamara@ndscenter.org)

---

---

---

---

---

---

---